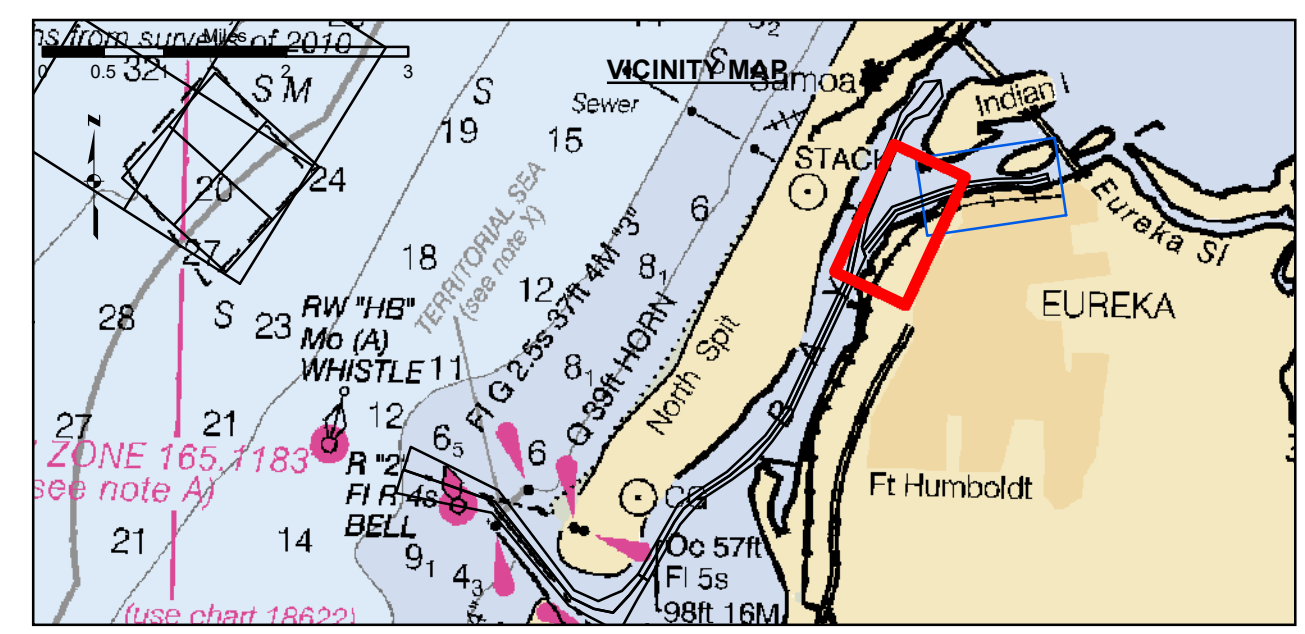


Angle Point	Easting	Northing
01E	5956172.98	2181852.13
02E	5957495.79	2183569.43
03E	5959682.09	2184360.53
04E	5960648.49	2184617.53
05E	5961936.19	2184796.03
06E	5963483.19	2184829.53
07E	5964225.19	2185019.53
08E	5964324.49	2184632.13
09E	5963537.79	2184430.63
10E	5961968.09	2184396.63
11E	5960727.59	2184224.73
12E	5959901.69	2183978.43
13E	5957741.49	2183232.93
14E	5956489.79	2181608.03
E1	5956331.39	2181730.13
E2	5957618.69	2183401.23
E3	5959741.89	2184169.53
E4	5960588.09	2184421.13
E5	5961952.09	2184596.33
E6	5963510.49	2184630.03
E7	5964274.85	2184825.82

PRELIMINARY ISSUE
THIS PLAN ISSUED FOR
ADVANCE INFORMATION ONLY



FLOOD →
← EBB



Federal Navigation Channel	Beacon, General	Contours
Shoaling Area	Obstruction Point	-26
Placement Area	Navigation Buoy	-25
Anchorage Area	Navigation Buoy	-24
Wreck Area	Shoalest Sounding*	-23
Submerged Wreck		-22
Angle Point		

NOTES:
DRAWINGS NOT TO BE USED AS NAVIGATION. ONLY CHANNEL CONDITION AT DATE OF SURVEY. THE LOCATION OF ALL NAVIGATION AIDS ARE BASED ON INFORMATION PROVIDED BY THE U.S. COAST GUARD. BUOY LOCATION REPRESENT THE POSITION OF THE SINKER ONLY.
SURVEYED BY THE CORPS OF ENGINEERS.
SOUNDING FOR THE CHANNEL MEASURED WITH MULTIBEAM ECHOSOUNDER AND ARE SHOWN TO THE NEAREST TENTH FOOT.
SOUNDINGS ARE BASED ON THE DATUM OF MEAN LOWER LOW WATER AT THE LOCALITY.
PLANE GRID AND COORDINATES ARE BASED ON THE STATE OF CALIFORNIA COORDINATE SYSTEM, LAMBERT CONFORMAL PROJECTION, ZONE 1 NAD 83, CALIFORNIA, AS DESCRIBED IN SPECIAL PUBLICATION NO. 235, PUBLISHED BY THE NATIONAL OCEAN SURVEY.

PROJECT DEPTHS ARE AS FOLLOWS:
BAR & ENTRANCE CHANNEL = 48 FEET
NORTH BAY, SAMOA TO MILE 5.0 & = 38 FEET
EUREKA CHANNEL, FIELDS LANDING CHANNEL & MILE 5.0 TO "N" STREET = 26 FEET
1:00 INDICATES THE NUMBER AND BEGINNING OF A LINE OF SOUNDINGS.
SOUNDINGS ARE BASED ON TIDE GAUGES REFERENCED TO U.S.C. & G.S.
BENCH MARKS AS FOLLOWS:
EUREKA & SAMOA CHANNELS - B.M. NO. 4 (1906) ELEV. 33.61' M.L.L.W.
ENTRANCE & NORTH BAY CHANNELS - B.M. NO. 9 (1937) ELEV. 16.35' M.L.L.W.
FIELDS LANDING CHANNEL - B.M. NO. 5 (1925) ELEV. 8.52' M.L.L.W.

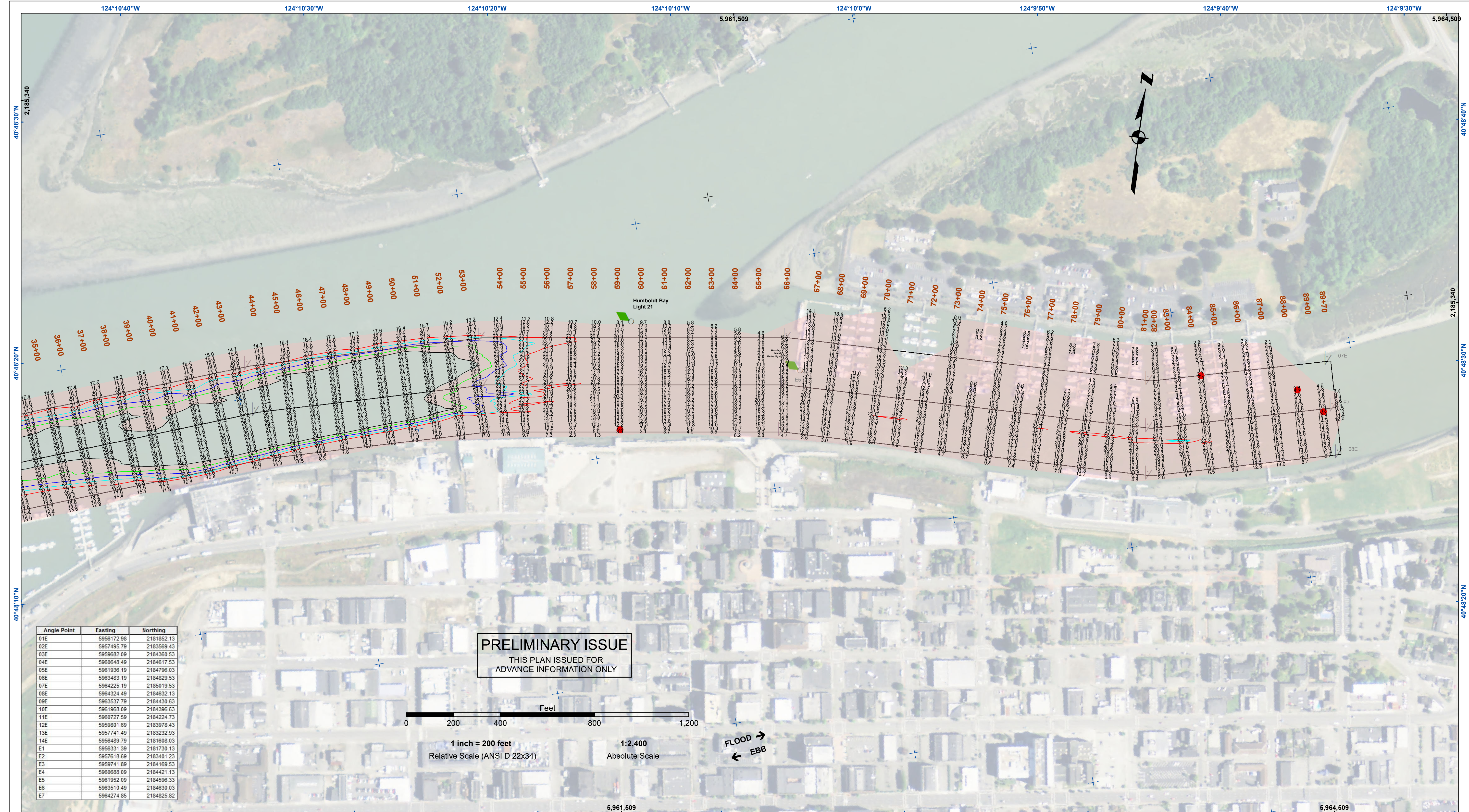
US Army Corps of Engineers
San Francisco District
450 Golden Gate Ave
San Francisco, CA 94102

DISCLAIMER: The United States Government furnishes no express or implied warranty, representation, or assurance, or any other form of liability whatsoever to any person by reason of any use of these data. The user is responsible for the results of any application of the data for other than its intended purpose. The user is responsible for the results of any application of the data for other than its intended purpose. The user is responsible for the results of any application of the data for other than its intended purpose.

Chart Date:	Jan 22, 2024
Designed by:	PDT
Plotted by:	PDT
Checked by:	PDT
Drawn by:	PDT

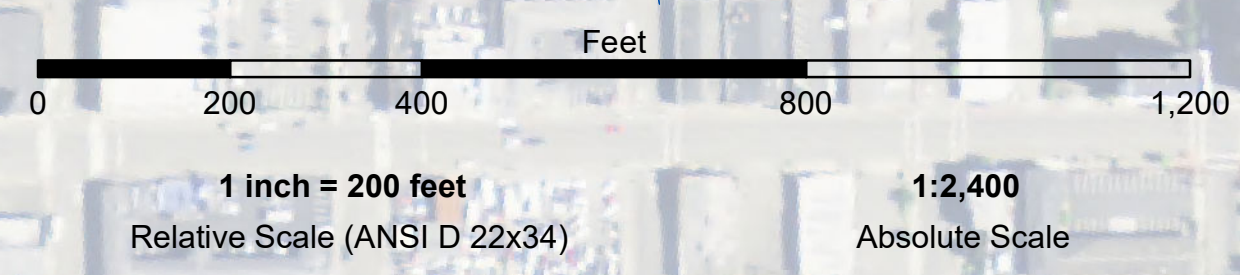
CALIFORNIA
HUMBOLDT COUNTY
**HUMBOLDT BAY
EUREKA CHANNEL
CONDITION SURVEY
12-15 JANUARY 2024**

**Sheet
Reference
Number
1 of 2**

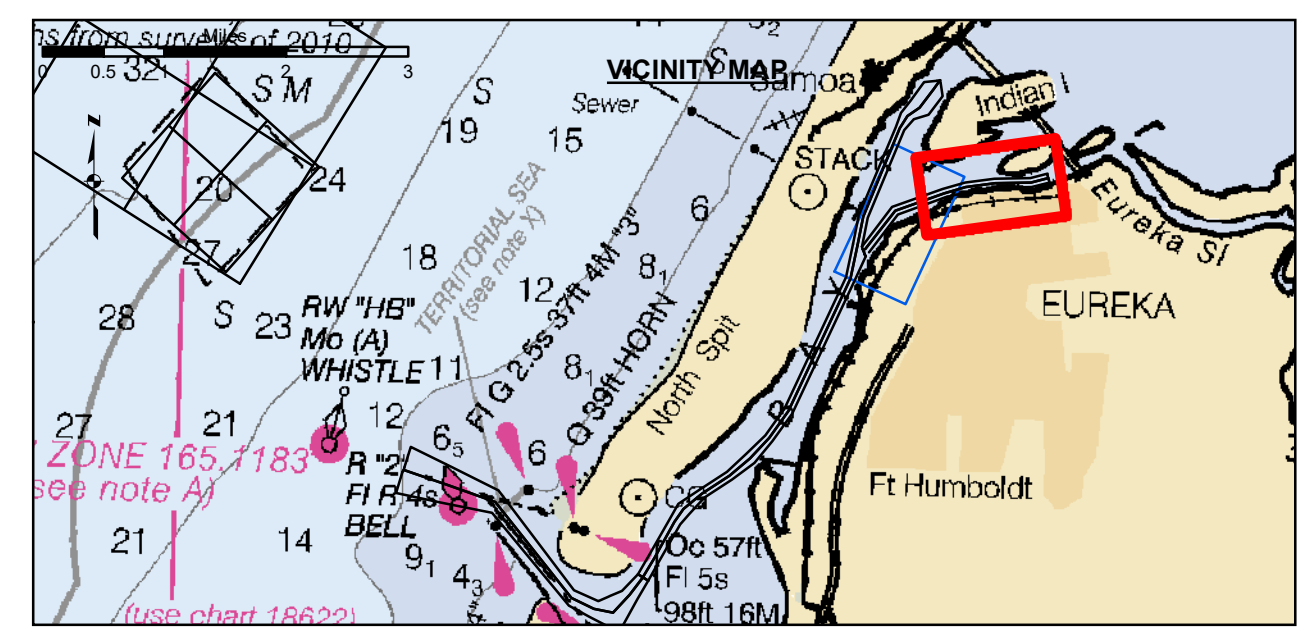


Angle Point	Easting	Northing
01E	5956172.98	2181852.13
02E	5957495.79	2183569.43
03E	5959682.09	2184360.53
04E	5960648.49	2184617.53
05E	5961936.19	2184796.03
06E	5963483.19	2184829.53
07E	5964225.19	2185019.53
08E	5964324.49	2184632.13
09E	5963537.79	2184430.63
10E	5961968.09	2184396.63
11E	5960727.59	2184224.73
12E	5959901.69	2183978.43
13E	5957741.49	2183232.93
14E	5956489.79	2181608.03
E1	5956331.39	2181730.13
E2	5957618.69	2183401.23
E3	5959741.89	2184169.53
E4	5960588.09	2184421.13
E5	5961952.09	2184596.33
E6	5963510.49	2184630.03
E7	5964274.85	2184825.82

PRELIMINARY ISSUE
THIS PLAN ISSUED FOR
ADVANCE INFORMATION ONLY



FLOOD →
← EBB



	Federal Navigation Channel		Beacon, General	Contours	
	Shoaling Area		Obstruction Point		-26
	Placement Area		Navigation Buoy		-25
	Anchorage Area		Navigation Buoy		-24
	Wreck Area		Shoalest Sounding*		-23
	Submerged Wreck				-22
	Angle Point				

NOTES:
DRAWINGS NOT TO BE USED AS NAVIGATION. ONLY CHANNEL CONDITION AT DATE OF SURVEY. THE LOCATION OF ALL NAVIGATION AIDS ARE BASED ON INFORMATION PROVIDED BY THE U.S. COAST GUARD. BUOY LOCATION REPRESENT TO THE NEAREST TENTH FOOT.
SURVEYED BY THE CORPS OF ENGINEERS.
SOUNDING FOR THE CHANNEL MEASURED WITH MULTIBEAM ECHOSOUNDER AND ARE SHOWN TO THE NEAREST TENTH FOOT.
SOUNDINGS ARE BASED ON THE DATUM OF MEAN LOWER LOW WATER AT THE LOCALITY.
PLANE GRID AND COORDINATES ARE BASED ON THE STATE OF CALIFORNIA COORDINATE SYSTEM, LAMBERT CONFORMAL PROJECTION, ZONE 1 NAD 83, CALIFORNIA, AS DESCRIBED IN SPECIAL PUBLICATION NO. 235, PUBLISHED BY THE NATIONAL OCEAN SURVEY.

PROJECT DEPTHS ARE AS FOLLOWS:
BAR & ENTRANCE CHANNEL = 48 FEET
NORTH BAY, SAMOA TO MILE 5.0 & = 38 FEET
EUREKA CHANNEL, FIELDS LANDING CHANNEL & MILE 5.0 TO "N" STREET = 26 FEET
1:00 INDICATES THE NUMBER AND BEGINNING OF A LINE OF SOUNDINGS.
SOUNDINGS ARE BASED ON TIDE GAUGES REFERENCED TO U.S.C. & G.S.
BENCH MARKS AS FOLLOWS:
EUREKA & SOMOA CHANNELS - B.M. NO. 4 (1906) ELEV. 33.61' M.L.L.W.
ENTRANCE & NORTH BAY CHANNELS - B.M. NO. 9 (1937) ELEV. 16.35' M.L.L.W.
FIELDS LANDING CHANNEL - B.M. NO. 5 (1925) ELEV. 8.52' M.L.L.W.

US Army Corps of Engineers
San Francisco District
450 Golden Gate Ave
San Francisco, CA 94102

DISCLAIMER
The United States Government furnishes this information as a service to the public. It is not intended to be used for any purpose other than that for which it was prepared. The user assumes all responsibility for the accuracy and completeness of the information. The user is responsible for the results of any application of the data for other than its intended purpose. The recipient may not transfer these data to others without also transferring this disclaimer.

Prepared Under the Direction of LT COLONEL W. SHEBESTA	Chart Date: Jan 22, 2024
Submitted by: Hydro Survey Team Leader	Designed by: PDT
Recommended by: Chief, Hydro Survey Section	Checked by: PDT
Approved by: Chief, Construction Branch	Drawn by: PDT

CALIFORNIA
HUMBOLDT COUNTY
**HUMBOLDT BAY
EUREKA CHANNEL
CONDITION SURVEY
12-15 JANUARY 2024**

**Sheet
Reference
Number
2 of 2**